

April 28, 2020

Kiwanis Horses for Handicapped Foundation of Pinellas, Inc. (H for H)
Walsingham Horseman's Association, Inc. (WHA)

Dear H for H and WHA Members:

We appreciate your collaborative spirit and the tour of the Walsingham Equestrian Park on December 13, 2019. The County's Parks and Conservation Resources (PCR) and Public Works (PW) Departments would like to provide you with an update of our progress and request your feedback on conceptual plans consultant GeoSyntec prepared for integrating stormwater management ponds within the park that will provide new aquatic habitats for attracted wildlife and enhance the riding experience. Our project goals are to improve water quality while enhancing the park and horseback trail riding experience.

Please take a moment to review the conceptual plans and comparison table included in this packet. Both plans reduce the WHA's requirements for vegetation management. The County will begin with a complete, one-time treatment and removal of exotic vegetation as part of the project. Bringing landscaping under control will make it much easier to maintain, and the County will take over maintenance of the areas within the proposed stormwater facilities.

This letter is being distributed to all those present at our meeting on December 13, 2019 (list attached). Please share with your organization and let us know if you or any of your members would prefer this information mailed to them directly. The project team is available to answer any questions you may have or discuss the plans in further detail. This may be accomplished over the phone, through email, or via a remote Microsoft Teams virtual meeting. Your valuable time and responses are much appreciated however you choose to share.

We regret that we cannot discuss these conceptual plans with you in person due to COVID-19 but hope you will take a moment to review the plans and provide your feedback by Monday, May 11th, which will allow us to refine the plans. As you review the plans, please keep in mind these are preliminary and conceptual in nature. Our main objective is to develop a plan that benefits our environment and all parties involved.

We look forward to partnering with you on this project.

Sincerely,

Rhonda Bowman, P.E.
Engineer 3, Stormwater and Vegetation Division
Pinellas County Public Works
14 S. Ft. Harrison Ave, 4th Floor
Clearwater, FL 33756
Office: (727) 453-3406 | Mobile: (407) 900-0742
rbowman@pinellascounty.org

cc: Kelli Levy, Public Works Director
Susan Goebel-Canning, Stormwater & Vegetation Division Director
Sean Griffin, Real Estate Specialist, PC Real Estate Management
Ryan DeSimone, Ecological Services Unit, PC Environmental Management



Walsingham Equestrian Park Stormwater Management Project Conceptual Plan Comparison

	Plan A MAXIMIZE WATER	Plan B MAINTAIN TRAILS
Trail Length <i>Existing: 17,400 linear feet</i>	16,570 linear feet	17,400 linear feet
Water Quality*	Better – Larger stormwater management ponds	Less – Smaller stormwater management ponds
Reduction of Palmetto Maintenance <i>Aids in mitigation of wildfires</i>	10.98 acres	6.72 acres
Disturbance of Old Growth Pines <i>SE corner of parcel, west of McKay Creek</i>	Minimized	Minimized
Impacts to Emergency/Hurricane Evacuation Areas <i>For horses; located off 102nd Ave N and adjacent to 125th St N.</i>	None	None

*Within areas of McKay Creek, water quality treatment is provided in two ways:

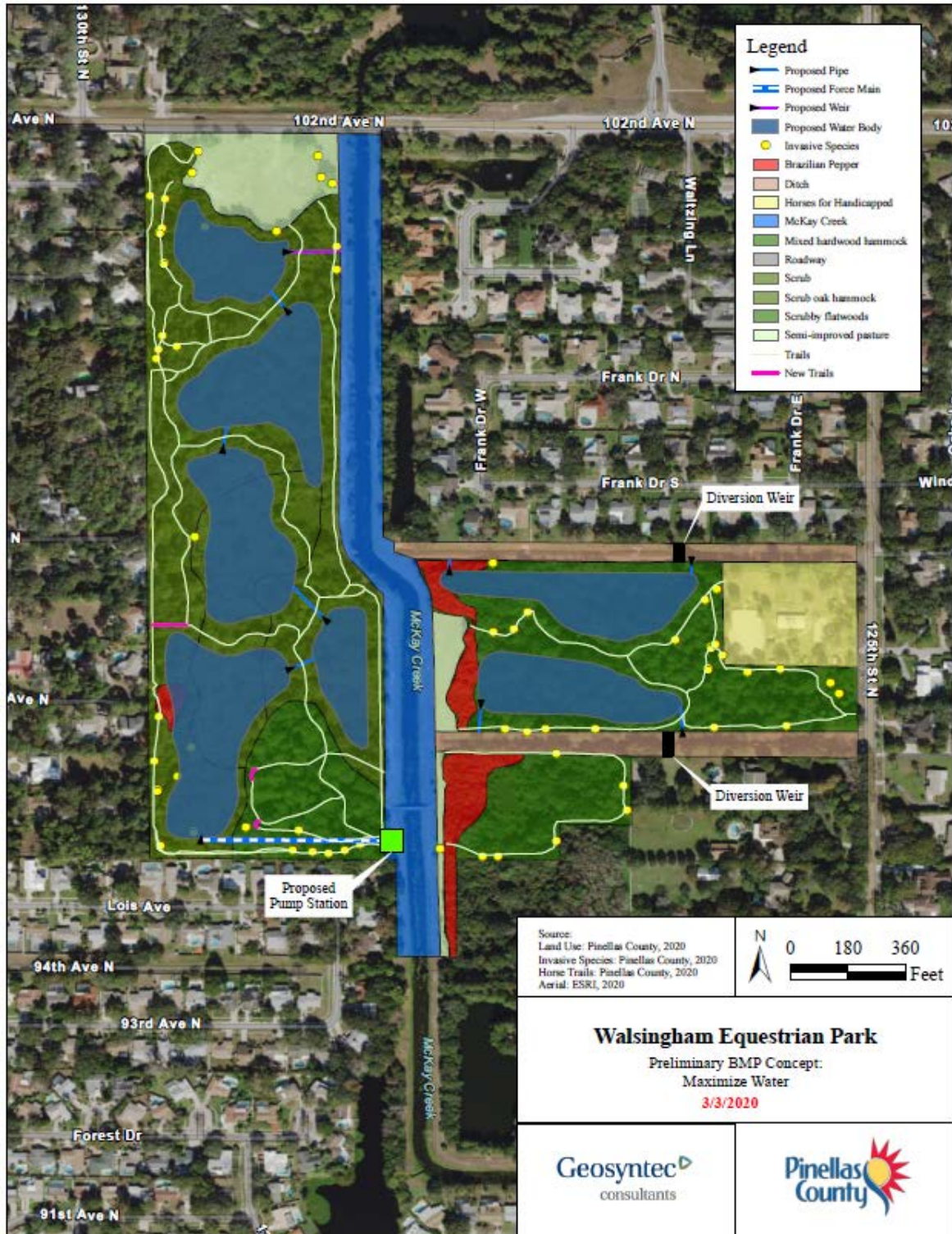
1. West side

On the south end of the park, flows are diverted from the creek by a quiet electric pump into a series of interconnected stormwater management ponds. Pollutants and nutrients will be removed as the water gradually flows through the system of ponds before being discharged back into the creek by an overflow weir located south of the pasture near 102nd Avenue. The ponds will be connected by culverts that will run underneath the trails.

2. East side

Stormwater runoff from the east will be redirected by diversion weirs in the existing ditches into stormwater management ponds for treatment before being discharged back into McKay Creek.

Plan A – Maximize Water Conceptual Plan



Plan B – Maintain Trails Conceptual Plan

