



Lakeshore Estates Roadway and Drainage Improvements PID 001177A

Public Information Meeting

March 1, 2018 6:00 p.m. – 8:30 p.m.

Palm Harbor University H.S., Palm Harbor



- 1 Background
- 2 Schedule
- 3 Proposed Improvements
- 4 Driveway Adjustments
- 5 Construction Sequence & Temporary Impacts





1

Background

Background

- Private development began in late 1950's
- Developer used dredged materials for fill of lots and streets (organic/clay – settling)
- Note wetland area in north portion of development
- Lake level controlled by sinkhole to Tarpon Springs
- Many lot elevations near street elevations
- Street profiles flat leading to poor drainage
- Lake level controlled by SWFWMD structure -2.6'
- street elevations low as 3.47' (Freshwater)
- High water table result of soils and seawalls
- Road base material (lime rock) failure due to high water table and pooling water (no road underdrains)
- Some inlets set back from streets and restricted by turf





09/10/2013

Background

- 2008 - Pinellas County received drainage complaints
- August 2015 - A Preliminary Engineering Report (PER) was completed identifying drainage (8 streets) and roadway (14 streets) improvements:

Drainage & Roads

N. Canal Drive
Citrus Drive
S. Canal Drive
Freshwater Drive
Maple Drive
Cypress Drive
Lake Shore Drive
Lake Shore Drive N

Road's Only

Oak Avenue
Ridge Street
Lake Shore Drive E
Lake Shore Drive W
East Canal Drive
West Canal Drive

Pinellas County, Florida

Lakeshore Estates Drainage Study

PID 001177A
Pinellas County



Prepared For:



Engineering & Technical Support Division
14 S. Fort Harrison Avenue
Clearwater, FL 33756

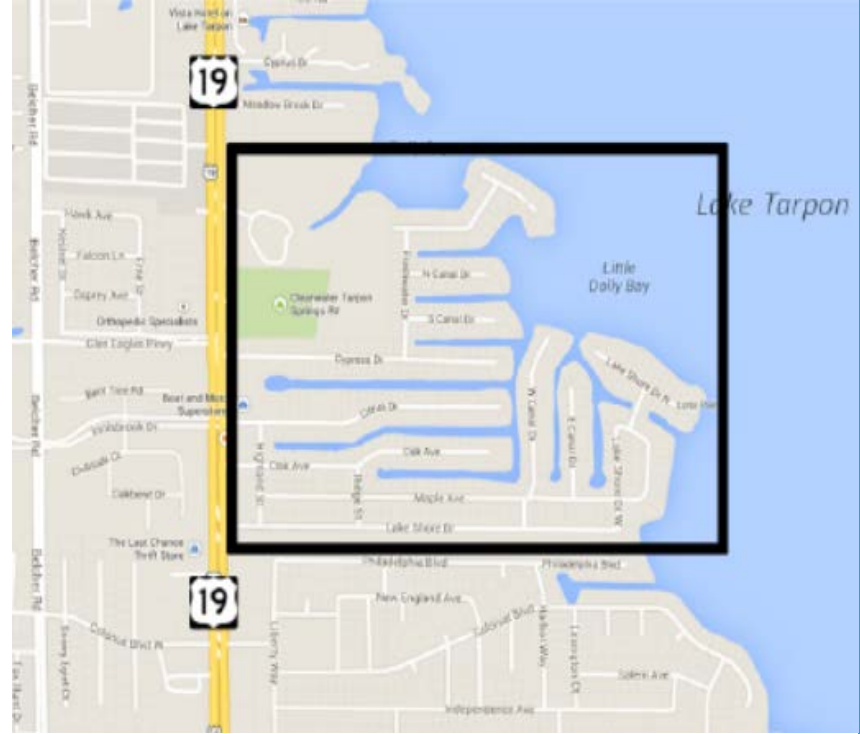
Prepared By:

HDR Engineering, Inc.
5426 Bay Center Dr., Suite 400
Tampa, FL 33609

August 2015

Background

- The PER included four primary recommendations to be refined and incorporated into the final design for the project area:
 - Construct curb & gutter where non existent in order to maximize the effectiveness of the improved roadway drainage system
 - Expand the existing storm drain system (without adding additional outfalls to the adjacent canals)
 - Mill & Resurface all streets
 - Provide full depth pavement reconstruction in selected areas to address pavement failures



Background

- Dec 2015 – Begin design and permitting of improvements to 5 streets, based on drainage priorities and budget (Remaining areas to be addressed in Penny IV program)
 - estimated budget was \$858,890
 - 15 month design to bid
- June 2016 – testing of road base revealed the extent of street reconstruction was necessary.
 - estimated budget \$2,060,795 (just drainage and road improvements)
 - several month delay in road reconstruction design and securing of additional funding
- 2017 – redesign for 1) expanded road reconstruction sections, 2) sewer line replacement and 3) repaving of remaining streets
 - total project estimated budget \$2,731,474
- February 2018 – final plans and bid package preparation



2

Schedule

Schedule (preliminary)

- Feb 2018 - construction plans, permits, bid package, funding (\$2,731,474)
- Mar 2018 - advertisement of construction bid
- May 2018 - construction bids received, reviewed and recommendation to BCC
- Jun 2018 - BCC award contract
- Jul 2018 - contractor to provide all necessary documents (insurance, bonds, etc.)
- Jul 2018 - pre-construction meeting with contractor & County
- Aug 2018 - second public meeting with contractor to review construction approach
- Aug 2018 - start construction*
- Aug 2019 - project complete*

Note: Construction Schedule will be updated at Construction NTP

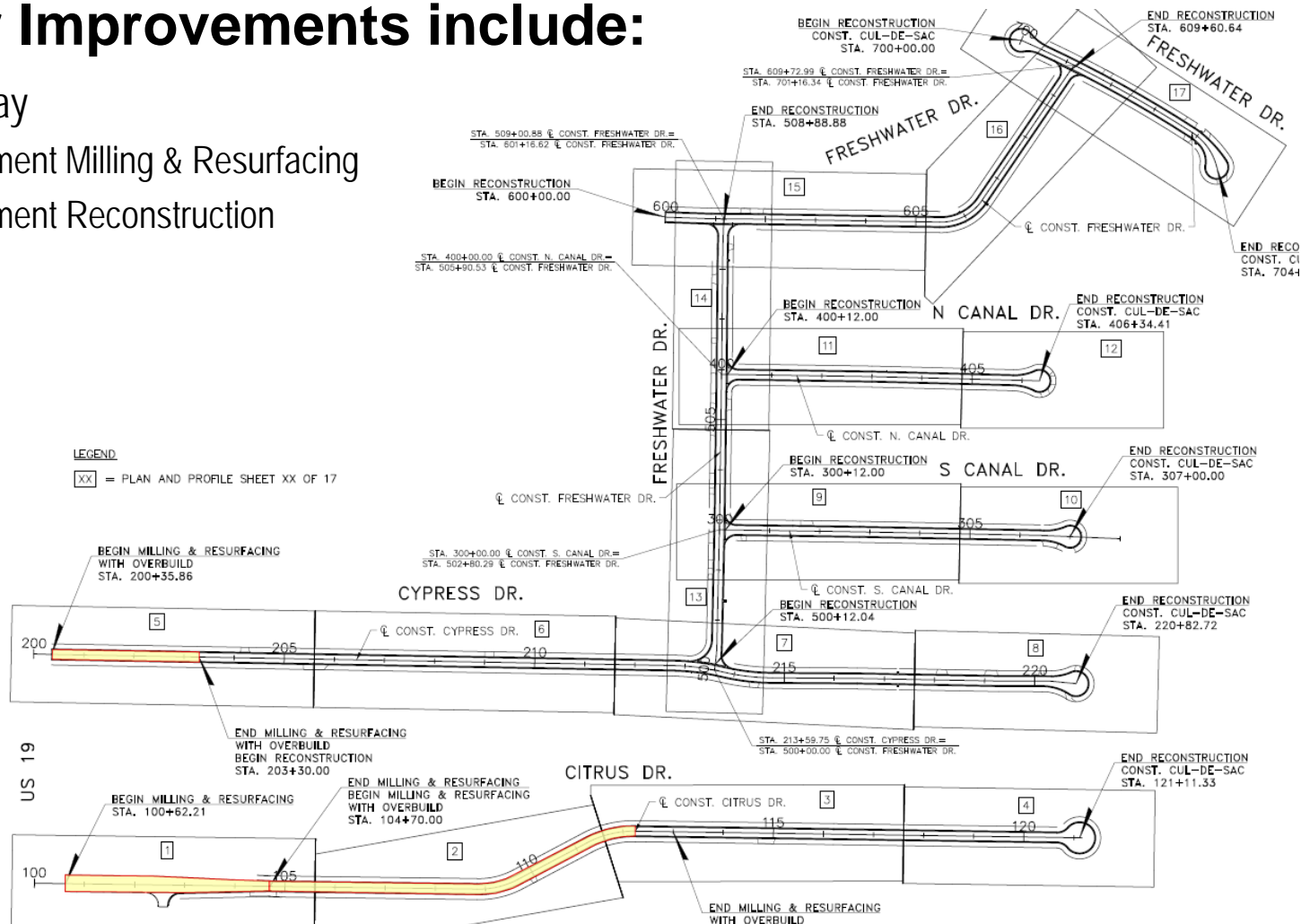


3

Proposed Drainage/Road Reconstruction Improvements

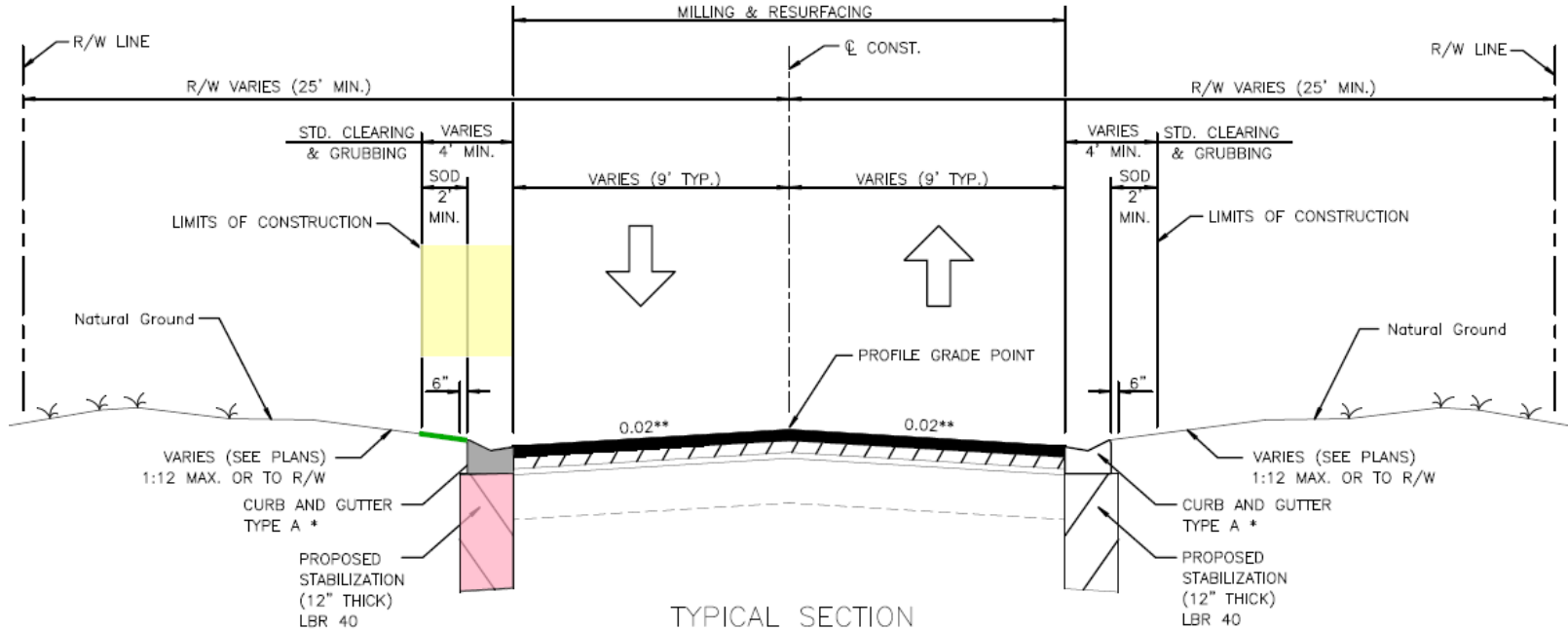
Major Improvements include:

- Roadway
 - Pavement Milling & Resurfacing
 - Pavement Reconstruction



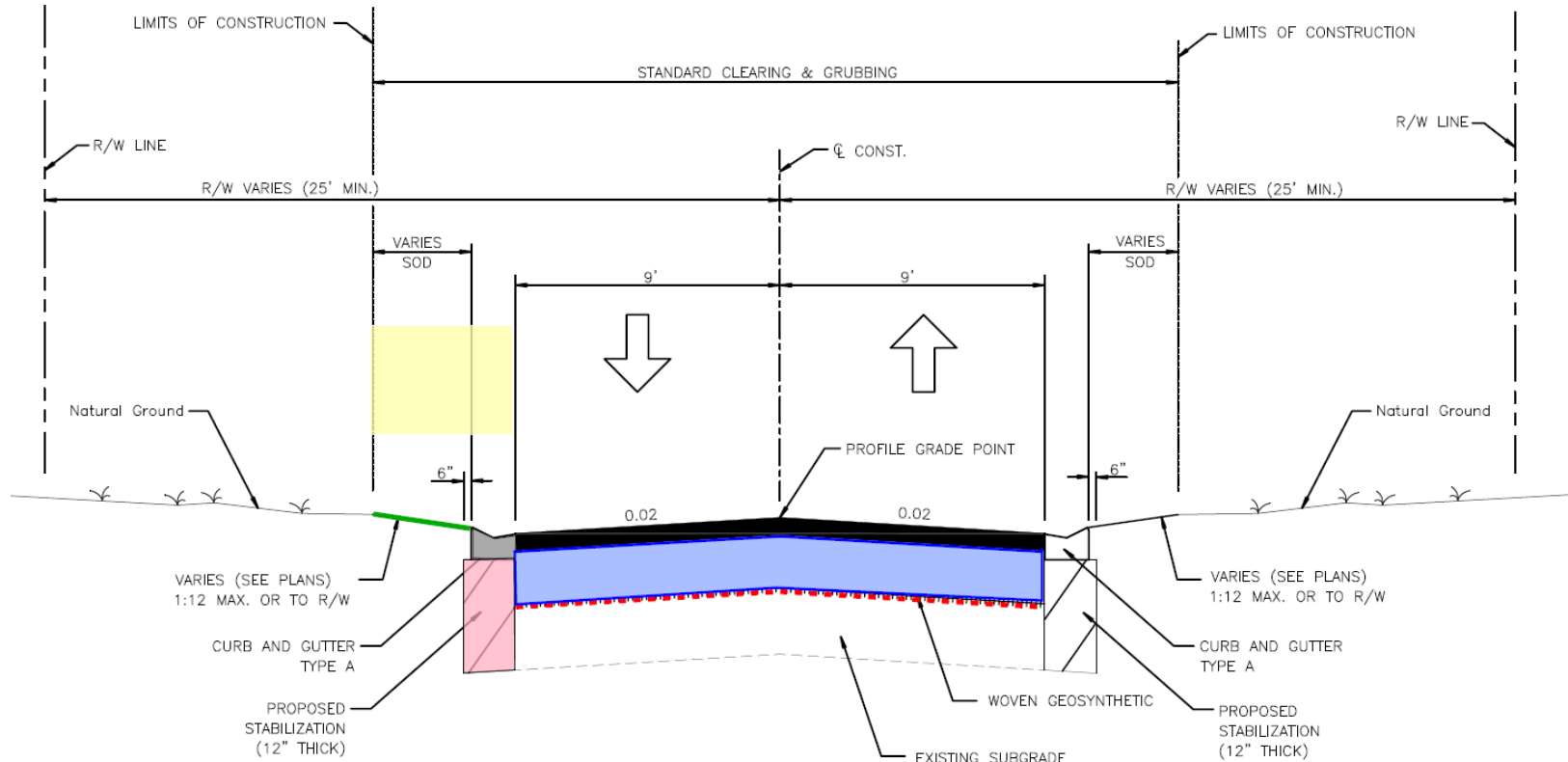
Major Improvements include:

- Roadway
 - Pavement Milling & Resurfacing
 - New curb or gutter

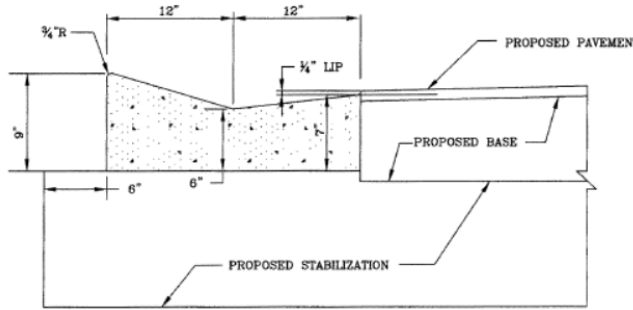


Major Improvements include:

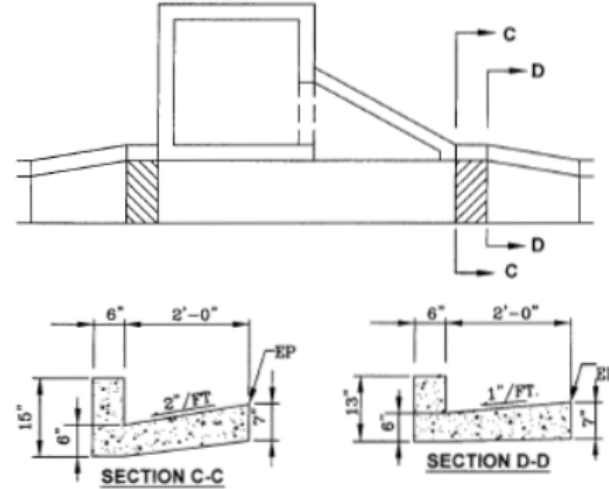
- Roadway
 - Pavement Reconstruction and curb & gutter



- Drainage
 - New Curb & Gutter
 - Expanded Storm Drain System



PROFILE VIEW OF CURB & GUTTER



<div style="text-align: center;"> PINELLAS COUNTY </div> <div style="text-align: center;"> P.C.E.D. CURB INLET (TYPES RC-3, 4, AND 5) SHEET 4 OF 4 </div>	DETAIL INDEX I.D.: <div style="text-align: center;">1255-SHT. 4</div>
	DATE: <div style="text-align: center;">FEB/2016</div>
	DRAWN BY: <u>IVANKO, FERNANDEZ, P.E.</u> <u>Chan Fernandez</u>
	REVISION: <u>6</u>



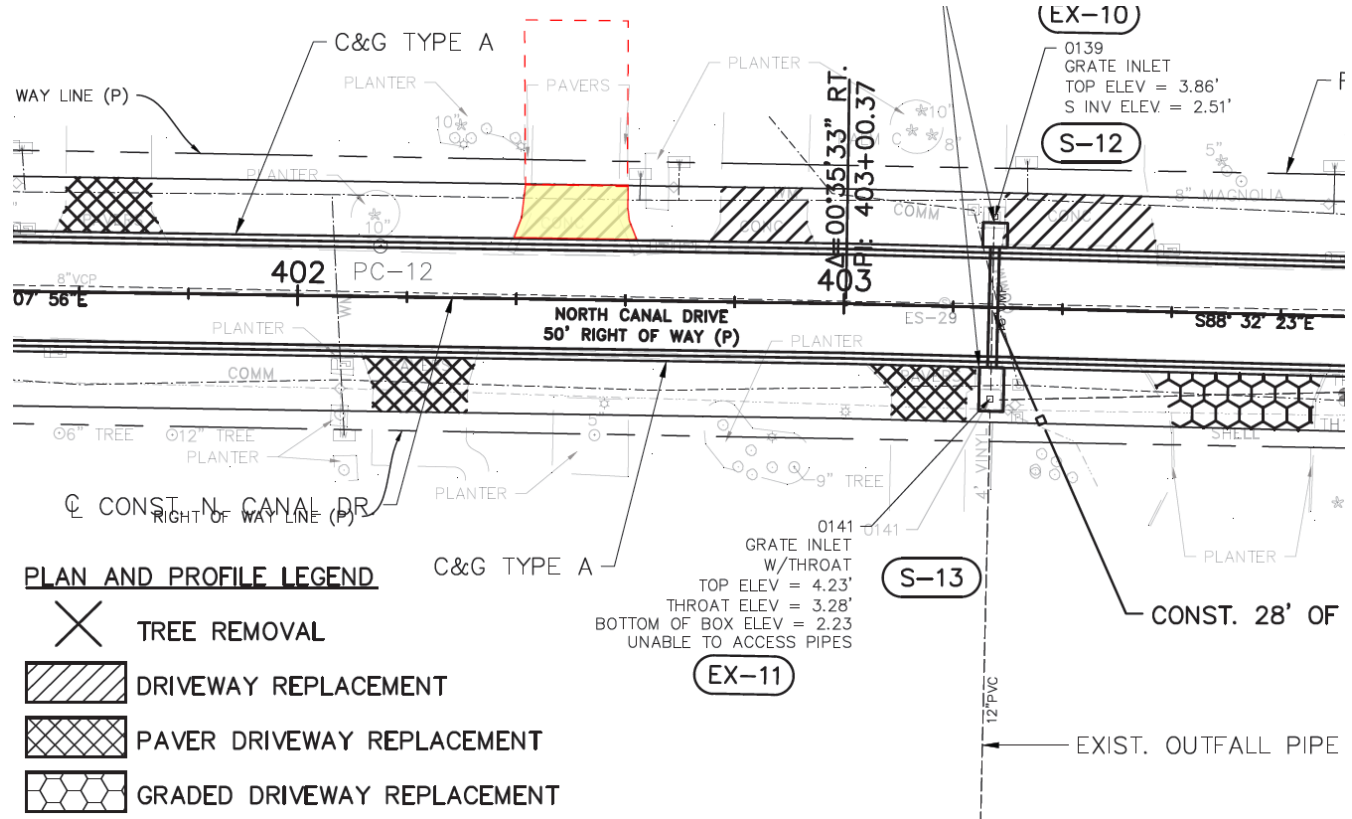
4

Driveway Adjustments

Driveway Adjustments

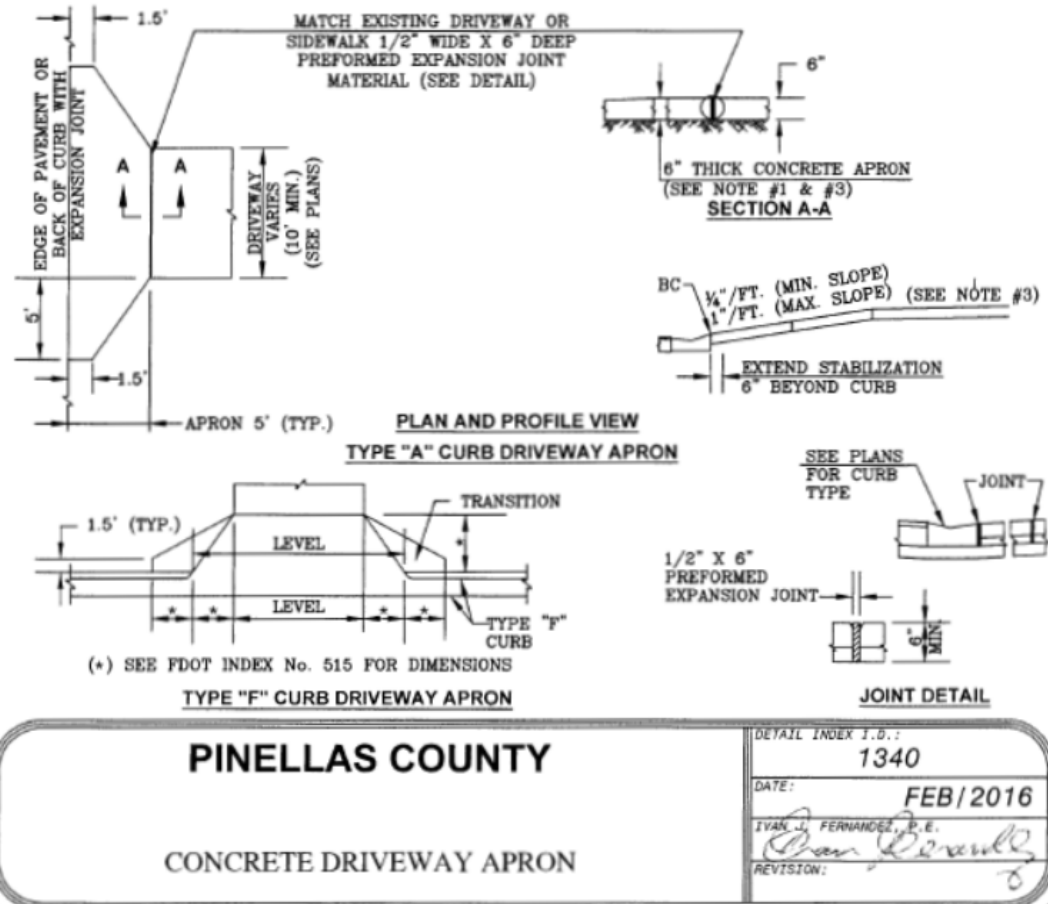
- 218 existing driveways
 - Concrete
 - Decorative Paver
 - Graded
- Contractor will replace driveways in-kind* up to right-of-way (as appropriate)

*Pavers will be removed
and set aside, concrete
base provided



Driveway Adjustments

- Portion of driveways must be reconstructed to accommodate:
 - Curb and Gutter construction / match new back of curb elevation
 - storm drain construction
- Contractor will only remove what is necessary
- Max. reconstruction to the R/W



Driveway Adjustments

- Replace curb & Gutter





5

Construction Sequence & Temporary Impacts

General Construction Sequence

- Install Erosion Control Devices (staked silt fence, inlet protection, etc.)
- Clearing & Grubbing
 - Includes removal of irrigation, landscape & hardscape items from R/W where in conflict with proposed construction
- Sawcut driveways
- Construct stabilization under proposed curb & gutter
- Construct curb & gutter and drainage structures (all streets anticipated)
- Reconstruct driveways
- Remove existing pavement and roadway base (by section)
- Construct geosynthetic and crushed concrete base (by section)
- Construct 1st lift of asphalt (by section)
- 2nd Construct final lift of asphalt (all streets)

What to expect during Construction

- Vehicle access will be provided although temporary delays and parking adjustments will be necessary
 - Access for Emergency services will be provided at all times
 - Expect streets to be reconstructed one side at a time
 - Barricades, fencing, sediment barriers and other safety measures
 - Temporary road paving until final paving
 - South Canal Drive will have its sewer line replaced as part of reconstruction
 - Entire subdivision will be milled and repaved
- ❖ County will hold another public meeting with the selected contractor prior to start of construction to review their approach and take input

What to Expect Post Construction

- Drainage system improvements will resolve standing water (following rainfall events) that was impacting vehicle traffic and road stability
- Drainage system improvements in some areas are limited by existing drainage outfall elevations, high water table and adjacent lots at relatively same elevation as road
- Runoff will drain to new inlets but may spread out of gutters and onto roadway during heavy rainfall events
- Reconstructed roadways will withstand high water table (crushed concrete base)
- Sewer line replacement on South Canal Drive will eliminate frequent repairs

Questions





Boneyard for Cut & Paste



Boneyard for Cut & Paste



Boneyard for Cut & Paste



Boneyard for Cut & Paste



Boneyard for Cut & Paste



Boneyard for Cut & Paste

