



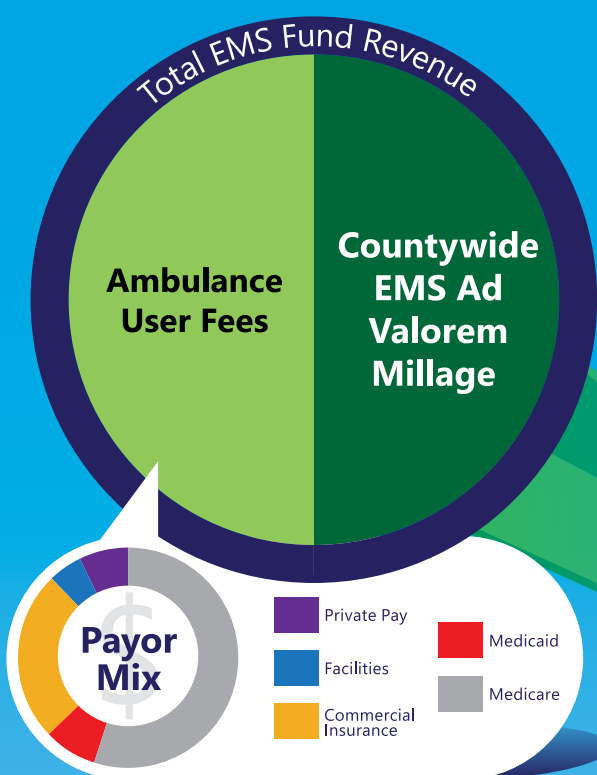
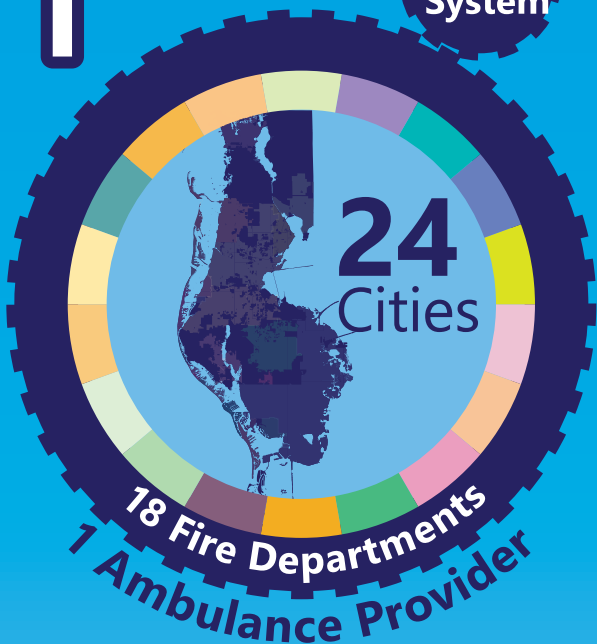
Whatever the crisis, wherever you are in the county,
Pinellas County EMS is here to provide medical care when needed.

Fiscal Year 2022 - 2023

1 COUNTY → 1 System

SUPPORTED BY

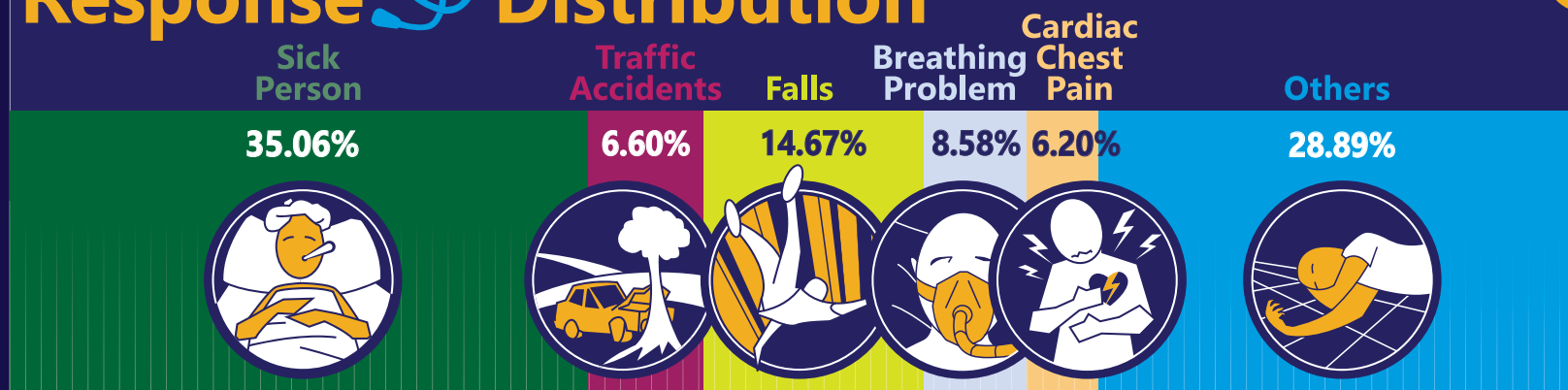
PROVIDING RESPONSES



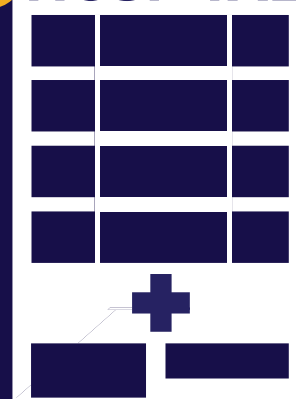
Do you have an Ambulance
Membership Plan?
www.pinellas.gov/firstcare
(727) 582-2008



Response Distribution



HOSPITAL





EMS AUTHORITY

EVERY PATIENT COUNTS



Whatever the crisis, wherever you are in the county,
Pinellas County EMS is here to provide medical care when needed.

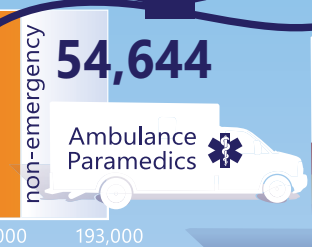
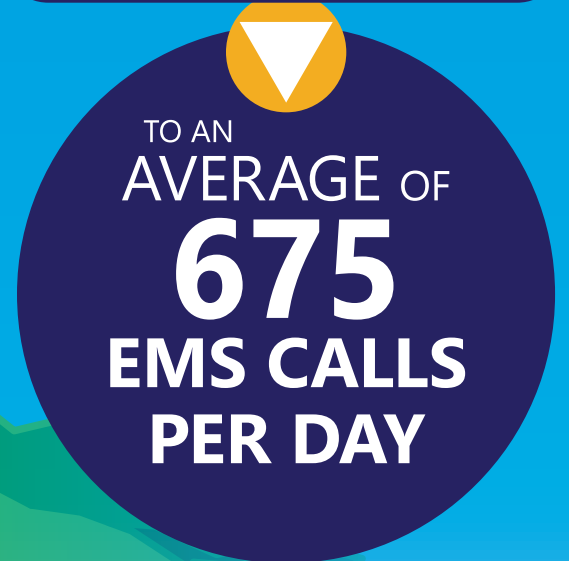
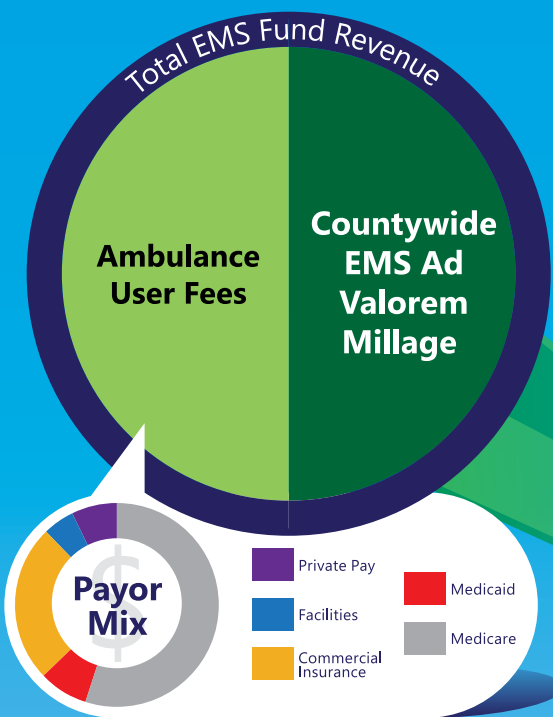
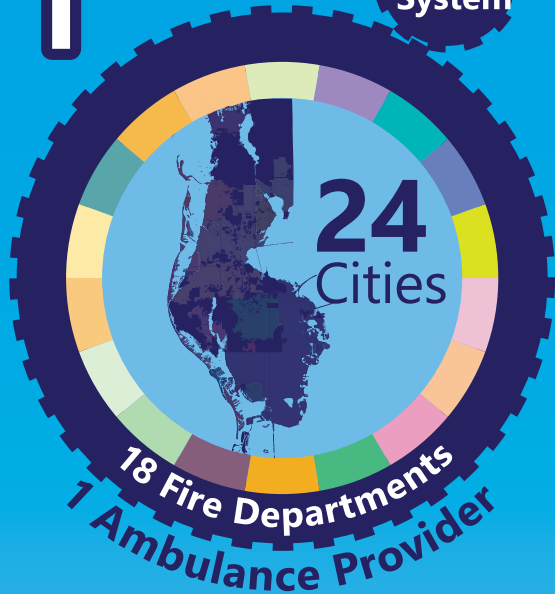
Fiscal Year 2020 - 2021

1 COUNTY

1 System

SUPPORTED BY

PROVIDING RESPONSES



Do you have an Ambulance Membership Plan?
www.pinellascounty.org/firstcare
(727) 582-2008



Response Distribution

