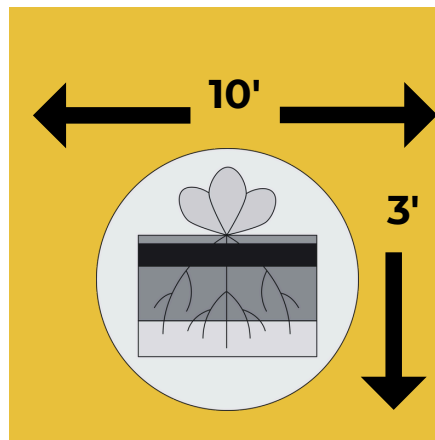


BALD CYPRESS

TAXODIUM DISTICHUM



Large, pyramidal
shaped, deciduous,
shade tree



Needs at least
10' x 10' of soil
space



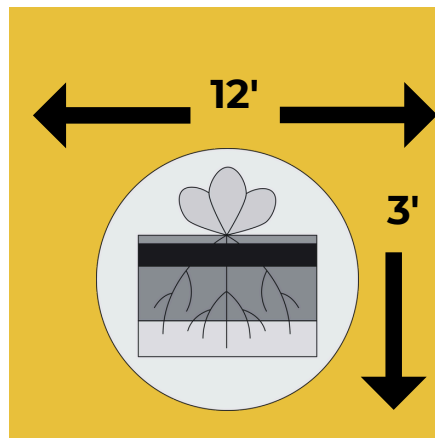
Likes sun and
wet or dry soils,
wind resistant

AMERICAN ELM

ULMUS AMERICANA



Large, vase shaped,
deciduous, shade
tree



Needs at least
12' x 12' of soil
space



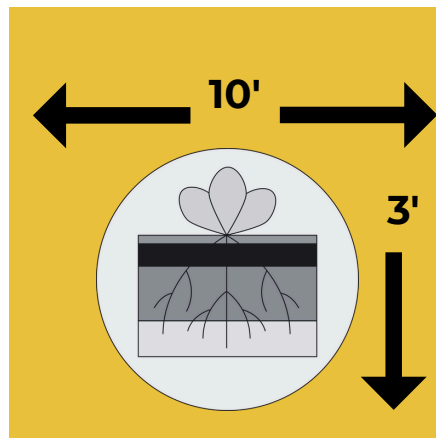
Likes sun and
wet or dry soils,
wind resistant

LONGLEAF PINE

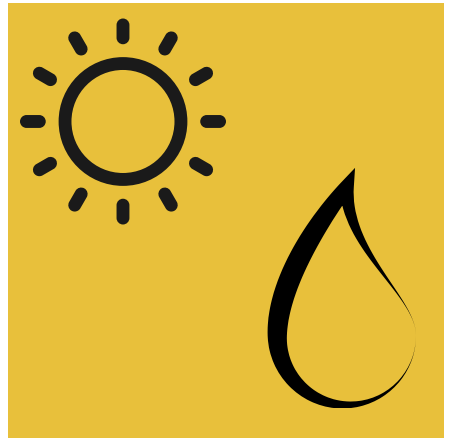
PINUS PALUSTRIS



**Large, evergreen
pine**



**Needs at least
10' x 10' of soil
space**



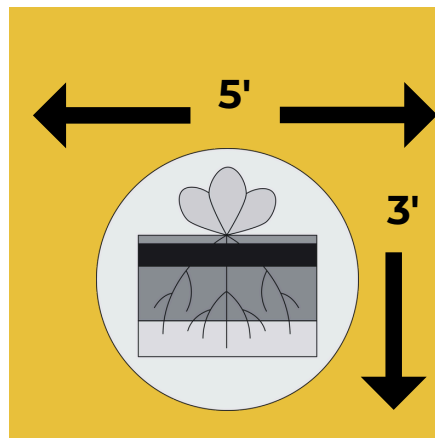
**Likes full sun
and well
drained soils**

DAHOOON HOLLY

ILLEX CASSINE



**Medium sized, oval
shaped, evergreen tree**



**Needs at least
5' x 5' of soil
space**



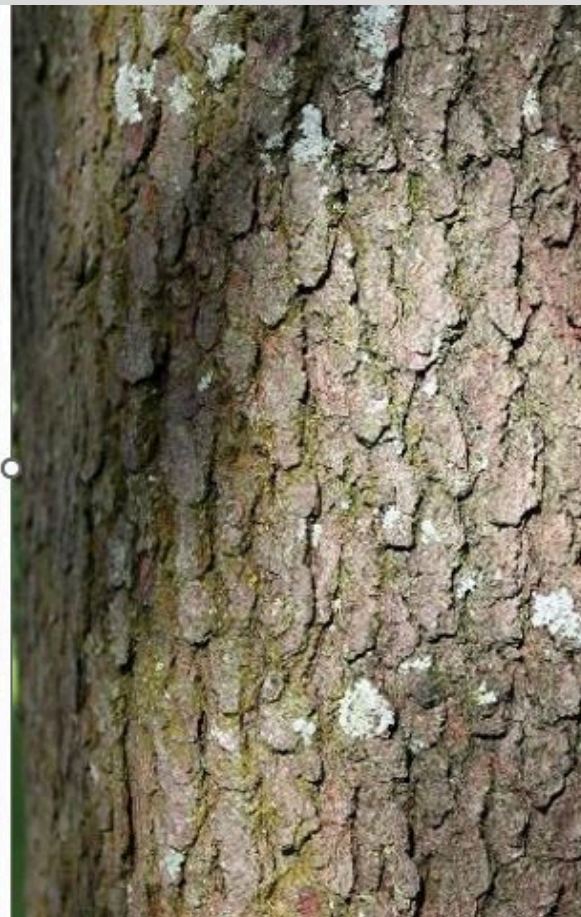
**Likes full sun or
shade, wet soils,
wind resistant**

RED BAY

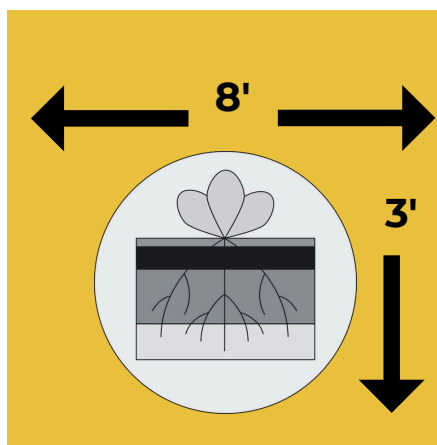
ILLEX CASSINE



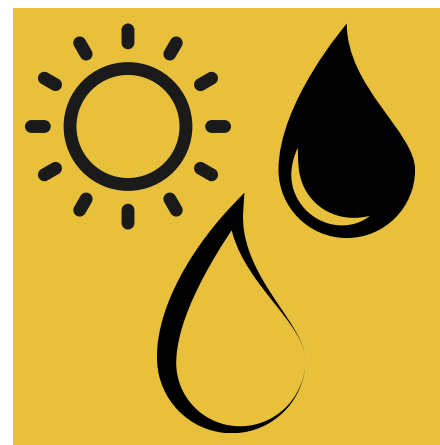
Urban Forestry
& Landscape Services



Medium sized,
rounded shaped,
evergreen



Needs at least
8' x 8' of soil
space



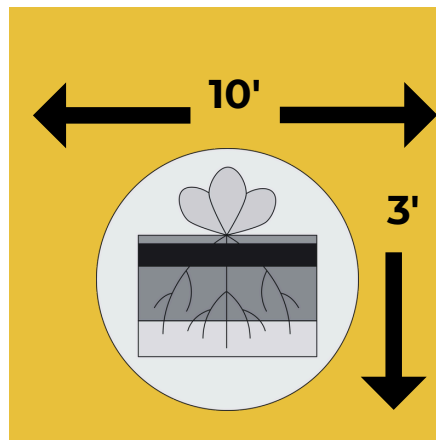
Likes full sun,
wet and well
drained soils

SLASH PINE

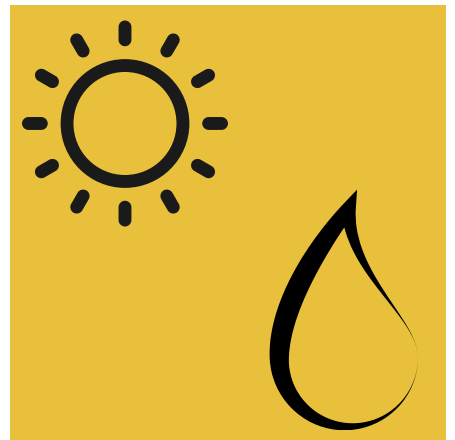
PINUS ELLIOTTII (VAR. DENSA)



Large, fast growing
evergreen pine,
shade tree



Needs at least
10' x 10' of soil
space



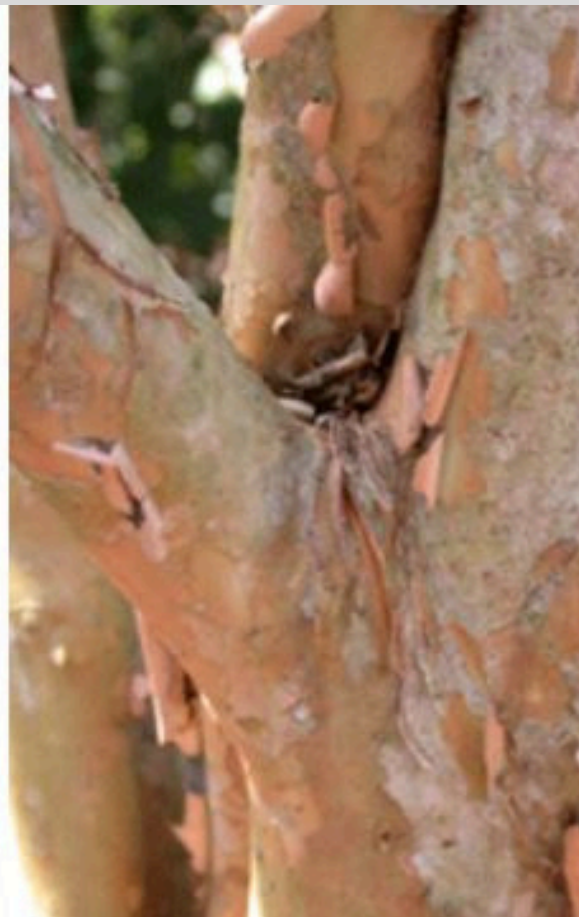
Likes full sun
and well
drained soils

SIMPSON STOPPER

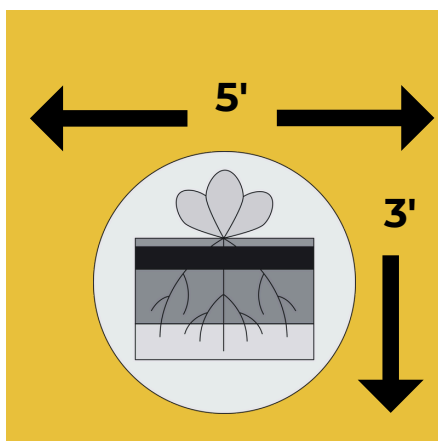
MYRCIANTHES FRAGRANS



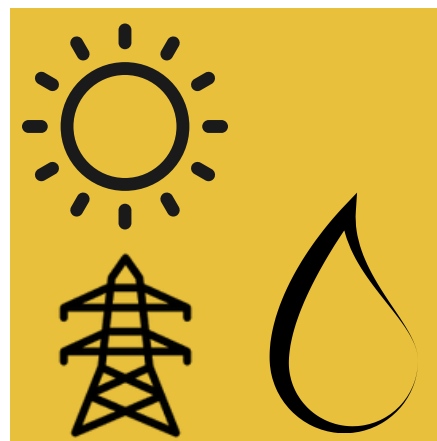
Photo by Linda Seals



Small, deciduous,
accent tree



Needs at least
5' x 5' of soil
space



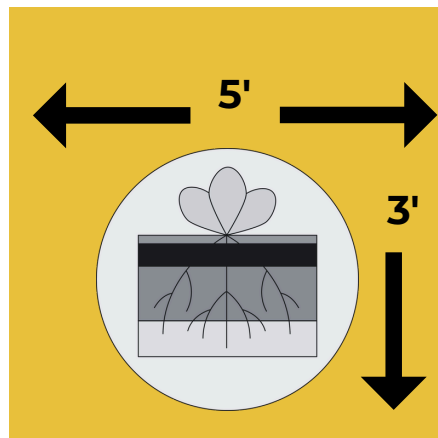
Likes full sun to
shaded, wet to well
drained soils, utility
approved

FLORIDA PRIVET

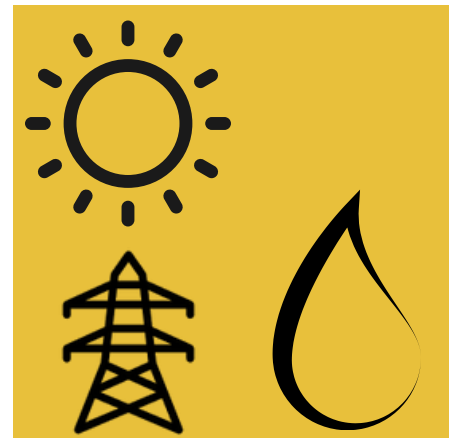
FORESTIERA SEGREGATA



**Small, evergreen,
accent tree**



**Needs at least
5' x 5' of soil space**



**Likes full sun and
well drained soils,
utility approved**