

**Mosquitoes**  
Carry Serious Diseases!

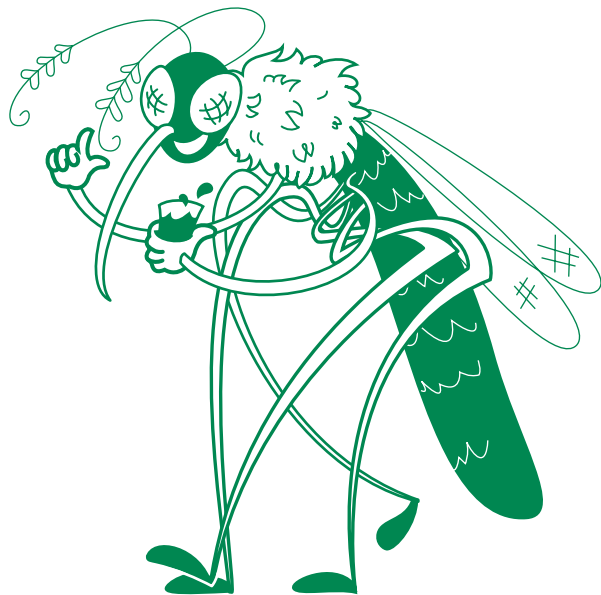
such as...

**ENCEPHALITIS**

**WESTNILE**

**DENGUE**

**MALARIA**



**Break the Cycle**  
Help stop their rampant spread!

## What you can do...

Empty, remove, cover or turn upside down any receptacle that would hold water — particularly buckets and trash cans.



Empty plastic wading pools, children's toys, trash cans, plant saucers and wheelbarrows.



Get rid of old tires, tin cans, bottles, jars and other containers — or keep them empty.



Screen rain barrels and openings to water tanks or cisterns.



Repair leaky pipes and outside faucets; drain hoses frequently.



Clean clogged roof gutters and drain flat roofs.



Fill holes in trees with sand or mortar — drain and spray them as required.



**Pinellas County Mosquito Control**

(727) 464-7503  
4100 118th Ave. N.  
Clearwater, FL 33762



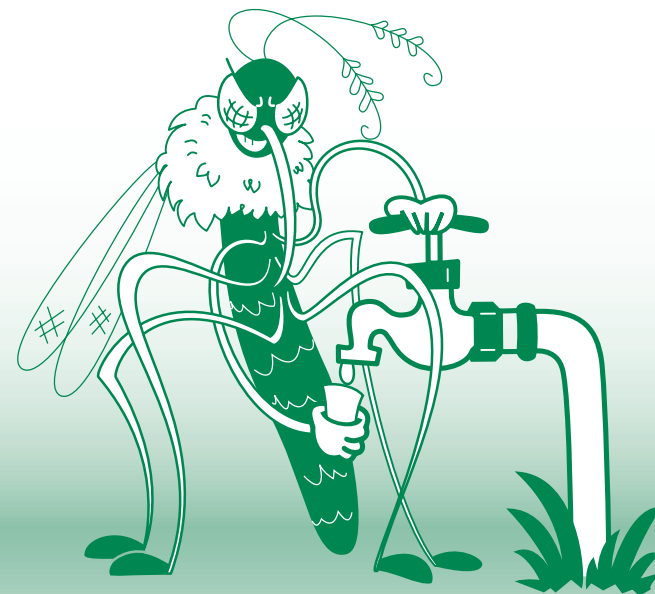
**[Pinellas.gov/mosquito-control](http://Pinellas.gov/mosquito-control)**

Pinellas County complies with all federal, state and local laws related to persons with disabilities. To request alternate formats of this information, contact the Office of Human Rights at (727) 464-4062 (V/TDD) or email [accommodations@pinellas.gov](mailto:accommodations@pinellas.gov). Funding for this brochure was provided by Pinellas County Mosquito Control. 5,000 copies were printed at a cost of \$245.00 or \$0.049 each. Produced in cooperation with the Pinellas County Communications Department. Reprinted on 10% recycled paper.



11/24

# STOP RAISING Mosquitoes AROUND YOUR HOME & YARD



**[Pinellas.gov/mosquito-control](http://Pinellas.gov/mosquito-control)**

**Larva**

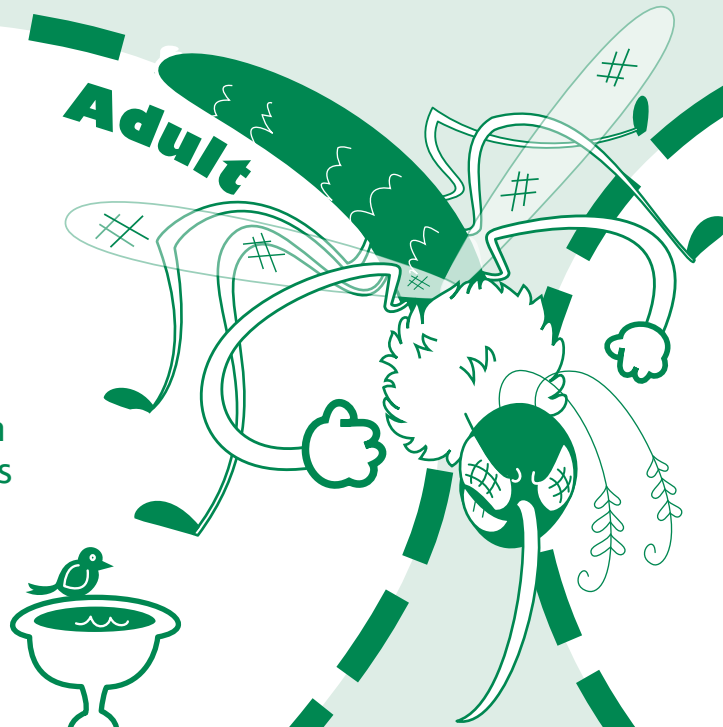


If there are any places around your house where water collects, such as water-holding containers and ornamental ponds, **you may be raising mosquitoes.**

**Pupa**



**Adult**



With both types of mosquitoes, the larvae or “wrigglers” grow quickly and turn into pupae or “tumblers”. Soon the skin of the tumbler splits open and out climbs another hungry adult mosquito.

All mosquitoes need water for their early life stages. Adult flying mosquitoes frequently rest in grass, shrubbery and other foliage, but they never develop there.

**Eggs**



Some mosquitoes lay their eggs in standing water where they hatch in a few days. Other mosquitoes lay their eggs in old tires, tin cans, bromeliads or other water-holding containers where they may remain unhatched for weeks or months until they are covered with water.

