

eGIS Steering Committee
Meeting Minutes
December 5th, 2024
1:36pm – 3:15pm
Facilitator – Jamie Munro, GIS Manager

In Attendance

Committee Members

Mike Twitty – Chair – Pinellas County Property Appraiser
Jason Malpass – Vice Chair - Pinellas County Sheriff's Office – ABSENT
Marc Gillette – Supervisor of Elections
Tom Almonte – Assistant County Administrator – ABSENT
Robert Mills – Office of Resiliency and Asset Management

Attendees - Internal

Jared Austin – Forward Pinellas
Rachel Blank – Utilities
Steve Clark – Business Technology Service/eGIS
Renee Duffey – Emergency Management
Julia Gallagher – Parks
Edin Grimaldo - Office of Asset Management
Jessica Holland – Sheriff's Office
April Klimkoski – Business Technology Services/eGIS
Lieutenant Chris Mantzanas – Sheriff's Office
Dayne Morris – Development Review Services
Gregg Obarski – Business Technology Services/eGIS
Jared Ritch – Solid Waste
Jeff Rohrs – Business Technology Services
Jacob Stephen – Safety & Emergency Services/911

Emilly Baechle – Parks
Thuyen Buendia – Business Technology Services/eGIS
Kelly Dickie – Business Technology Services/eGIS
Jim Fogarty – Safety & Emergency Services/911
Shane Gendron – Utilities
Steve Harper - Parks
Quentin Jones - Utilities
Ciara Manns – Sheriff's Office
James McDermott – Department of Admin Services
Jamie Munro - Business Technology Services/eGIS
Christopher Richardson – Utilities
Allison Reinbolt – Business Technology Services/eGIS
Toni Smith – Business Technology Services/eGIS
Scott Stillwell – Public Works

Attendees – External

Thomas Mahony – City of Clearwater
Wioletta Dabrowski – City of Clearwater
Angie Tootle – City of St Petersburg
Abbie Poag – City of Largo

Daniel Mayer – City of Clearwater
Matt Smith – City of Tarpon Springs
Stephanie Ringuet – City of St Petersburg

Agenda

1. Call to Order
2. Welcome and Introductions
3. Citizens to be Heard
4. Approval of Minutes from the September 5th, 2024, meeting
5. Working Group Presentation
 - a. Accomplishments and The Road Ahead
 - i. County Enterprise GIS
 - ii. Department Presentations
6. Open Discussion
7. Upcoming Meetings
8. Adjournment

Call to Order

The meeting was called to order at 1:36pm by Mike Twitty.

Welcome and Introductions

Introductions were made around the room.

Citizens to be Heard

No citizens were in attendance.

Approval of Minutes

Mike Twitty asked for motion to approve the minutes for the September 5th, 2024, meeting.

Motion to approve from Marc Gillette, seconded by Robert Mills, all in favor. Minutes approved.

Working Group Presentation

Accomplishments and The Road Ahead

County Enterprise GIS

Jamie Munro began by saying that this meeting was going to be about the county GIS accomplishments from 2024 and the road ahead initiatives by each representing departments. First off, Jamie wanted to mention that in January 2025, the eGIS team will be meeting with the ESRI representatives for the annual ESRI Planning Workshop. This is where the eGIS Team discusses with ESRI our GIS initiatives for 2025 and beyond. This helps the County coordinate our annual credits for professional services and training initiatives. He encouraged departments to discuss their needs for the next year so that those needs can be incorporated into the Esri planning discussions. Jamie then briefly went over some of the accomplishments from the eGIS Team for 2024, which included the ESRI Amendment, infrastructure updates such as KYZ, program areas such as damage assessment and implementations such as fiber network. The road ahead for 2025 for the eGIS Team will revolve around moving all users from ArcMap to ArcGIS Pro, which will involve more ArcGIS Online access, and to migrate to a more service-oriented architecture. There will be some differences in how we edit data (branch

versioning) and use the read only database (ArcGIS Online), as well as aeriels and municipal data sharing. The eGIS infrastructure will be moving to enterprise servers in the cloud. eGIS will also be moving 100+ applications to new platforms, including CrimeViewer. There are also many synergies that eGIS will be involved with helping other county departments with initiatives like LIDAR, Substantial Damage (which affects many county departments), Asset Management (Cityworks), and Microsoft (PowerBI, SharePoint).

Building and Development Review Services

Dayne Morris talked about how their department is more of a consumer of GIS and that eGIS deserves the credits for their GIS. He mentioned the use of a “combined” Flood Layer for Permitting, which would combine 4 different regulatory flood plains together to do analysis for a Yes/No automation flood zone process. He also mentioned the current permitting map which is out of date because it uses data that stopped in 2019 when they moved to Accela. This map will need to be redone soon. They were very much involved in the damage assessment for the 3 hurricanes that affected Pinellas County this year and are also now working on the substantial damage assessments. The use of the different applications for damage assessment helped with their storm work.

Construction and Property Management (DAS)

James McDermott talked about how they were able to utilize the GIS dashboards to better communicate with their leadership and help the director level make decisions. GIS analyst, Meilin Haidl created an experience builder application for their leadership which includes dashboards and data for their asset management, post-disaster activities and administration. This enabled their leadership to find everything needed in one application. They are also working on their level of service and risk models for all their owned assets and to where leadership can view these easily with maps and dashboards. James also added in that he will be leaving the county by the end of the year, but it has been great working for the county.

Forward Pinellas

Jared Austin began by mentioning their biggest project of 2024 was the Live Local Act Dashboard that was created which tracks projects for affordable housing for the county. This was very successful and generated a lot of attention in local news and was able to present at multiple conferences. Mike Twitty asked Jared if this dashboard included the local governments updates and Jared said they will be working on that in the future. Moving forward for 2025, Forward Pinellas will be focusing on ArcUrban along with multiple projects with Tarpon Springs, Clearwater and Indian Rocks Beach and the Gateway area.

Housing and Community Development

Alan Shellhorn was not able to attend the meeting but eGIS team member April Klimkoski gave an update for him. In 2024, eGIS worked on helping Housing and Community Development partner with University of Florida GeoPlan Center on the Pinellas Historic Resource Project. This initiative was set out to identify historic resources countywide and by jurisdiction, which included nationally and locally designated resources as well as building and structures 50 years or older. This data was then combined with the Property Appraiser data and mapped out Florida Master Site File, National Register of Historic Places and Local Landmark and Districts. This data came in handy during the hurricanes to track impacts on historic resources. Mike Twitty asked if this data could be shared for them to use on their website and April responded most likely yes. For 2025 they will continue with the Pinellas Housing Action (HAP) tool which helps identify the county’s housing and community development and suitable housing based on different criteria. Eventually this application will be made public.

Parks and Conservation Services

Emilly Baechle spoke on their 2024 accomplishments were mainly improving their “data completeness” of their strategic assets. They work in Cityworks to prepare quarterly summary reports on their work orders. They also reconfigured their work orders in Cityworks to include asset onboarding questionnaire. Their 2025 goals are to continue to build out the data completeness on their strategic assets and begin their asset management plans. They are also planning updates to their SharePoint page. Emilly did want to focus on the hurricanes and what Parks were dealing with in the aftermath. She mentioned that Hurricane Milton caused extensive tree damage throughout all parks in the County. They were able to quickly create and utilize a Survey123 to catalog all the tree hazards, which can be used in the future with some enhancements. A big thanks was given to the eGIS team for helping with this initiative.

Property Appraiser

Mike Twitty talked about the need for them to be migrating to ArcGIS Pro before April 2025. He mentioned they continue to work with Esri Canada on 3D workflows for condominiums. They will be working on upgrading their spatial databases to leverage the latest version of the Esri Parcel Fabric. He also mentioned how they are working with the public on the damages from the hurricanes and helping them with letters and appraisal information. Renee Duffey asked about the status of the condominium structure legislation and what was going on with that. Mike responded that they are working on finding the right solution to move forward on this and that the legislation had set the milestone for the end of the year but most likely that will be extended.

Public Works

Scott Stillwell spoke about how Public Works has been working on automating 6 new risk models for their asset data using python, model builder and attribute rules. They have created dashboards to show data completeness of all their asset data. They also use PowerBI to make daily refreshes to their County public website for transparency. Their roadway departments have worked on integrating the resurfacing program fully into GIS and Cityworks with all new work order templates, map books and dashboards. During the recent hurricanes, Public Works coordinated with Emergency Management and their debris contractor to develop models for debris demand. They were able to use the damage assessment data along with LIDAR based tree canopy to predict the demand. The debris contractors were given temporary access to facilitate work planning and real time tracking dashboards. A big emphasis for 2025 will be working on building a new Green Infrastructure data layer which will eventually be a shared layer. Dayne Morris asked if these would include both County and private green infrastructure and Scott responded that they could do both and attribute it accordingly. Scott mentioned if any department has data to add to this to let him know. Renee Duffey mentioned that this data would be helpful with recovery mitigation and grant funding.

Safety and Emergency Services/911

Jacob Stephen went over some of the enhancements such as implementation of the Esri AED Solution (now added to 911 maps), site address labeling on 911 maps, and wireless Core MDC updates. He also mentioned that they updated the road network with the new Gateway expressway data. Additional projects they are working on are using the closest unit/AVL dispatch, which enables them to route to landmarks instead of an address. They continue to perform a project of data validation for NENA NG911, and working on new group layers, such as Homeowner Associations, which they are working on creating polygons which includes some contact information. Mike Twitty asked if this will be shared, and Jacob said yes. The data is only included homeowner associations and not condo associations. Jacob then shared a story map of their support during the hurricanes.

Sheriff's Office

Jessica Holland talked about how they love GIS! She mentioned that they have been working with Workforce, Survey123 and Quick Capture. They first utilize the Workforce solution for their Valspar support. This solution helps the Sheriff's office report, track and respond to incidents during the event. This year ESRI provided drone support at the event. The Sheriff's office also uses Workforce, Survey123 and dashboards for their Storm Event Management and Request Handling. There are opportunities in the future to merge some of these with WebEOC. They had the opportunity to work with ESRI to use ArcGIS Mission for Shallow Water Rescue exercise, which they are looking forward to exploring more with the newly released version. They are looking forward to next year to roll out a Public Surveillance Camera Registration to where the public can use a Survey123 form to register their private or business cameras for Sheriff's use, which would remain confidential. They wanted to express thanks to the eGIS team for all their help, especially Dapo Satiregun, Allison Reinbolt and Gregg Obarski.

Solid Waste

Jared Ritch mentioned their top priorities for 2024 were to digitize their Solid Waste utility assets, create Cityworks work order dashboards and mature their GIS attribution on their assets. 2025 is continuing to mature their attribution on their critical assets and finishing up the leachate assets. He added that they were working on a QR Code pilot project. As for the storms, he showed some aerial photos from the internal storm viewers that showed before and after views of temporary debris piles on their site.

Utilities

Christopher Richardson talked about projects with consultants such as their lead and copper rule revision and As-Builts (scanning/mapping). Rachel Blank talked about how they have been using ESRI Insights to create dashboards for As-Builts backlogs and AMI (meter replacement). With ESRI moving away from Insights soon they will need to move to PowerBI for these types of reports. As for during storms, Christopher mentioned they were able to create and view Lift Station statuses from SCADA. Shane Gendron then mentioned that they are also working with consultants on their asset management plans and BRE models.

Emergency Management

Renee Duffey talked about their 2024 accomplishments which were KYZ 2.0, Population Analysis & Shelter Needs Assessment, Critical Facility Risk Assessment and Preliminary Damage Assessment support. She mentioned the GIS Unit in the EOC during events, which include most of the eGIS Team as well as members for Forward Pinellas, Construction and Property Management, Safety and Emergency Services/911, Office of Resiliency and Asset Management, Property Appraiser, Public Works, and Utilities. She showed a slide of some of the questions that the GIS Unit is asked during a storm, which can be from a map request to a data request to an application. Some wins for 2024 Hurricane support were the drone effort, which had 3 different contractors ending up with 1TB of drone videos and 1" aerials for the entire county, Search and Rescue (USAR-SARCOP), KYZ Stability (40,000 users in 2 minutes and no down time), over 3,000 hours and counting for support with Hurricane Helen and Hurricane Milton, and dozens of online maps, dashboards, surveys, data, and applications. Looking ahead is recovery support, substantial damage improvements, improved data sharing and workflows between county and municipalities and continued integration and accessibility of data and products across departments.

Open Discussion

Jamie showed a slide with the 2025 ESRI conference schedule and mentioned that there were still complimentary passes available for the User Conference and Southeast User Conference. Please get with Toni Smith for any additional requests for passes.

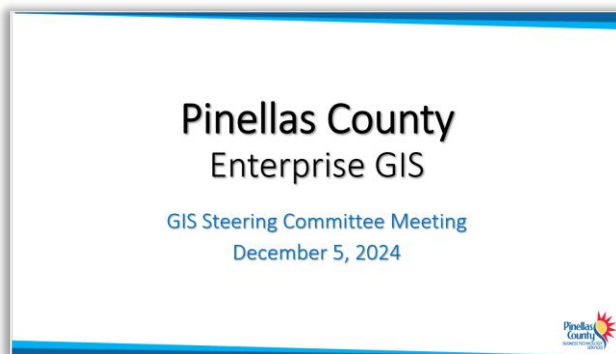
The next meeting is scheduled for March 6th, 2025.

Adjournment

Meeting adjourned at 3:15pm. Marc Gillette motioned to adjourn; Robert Mills seconded.

Happy Holidays to all!

PowerPoint Presentation



**Pinellas County
Enterprise GIS**

GIS Steering Committee Meeting
December 5, 2024

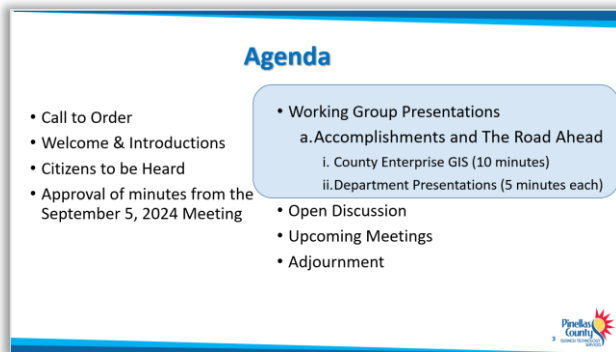
Pinellas County
FLORIDA



Agenda

- Call to Order
- Welcome & Introductions
- Citizens to be Heard
- Approval of minutes from the September 5, 2024 Meeting
- Working Group Presentations
 - a. Accomplishments and The Road Ahead
 - i. County Enterprise GIS (10 minutes)
 - ii. Department Presentations (5 minutes each)
- Open Discussion
- Upcoming Meetings
- Adjournment

Pinellas County
FLORIDA



Agenda

- Call to Order
- Welcome & Introductions
- Citizens to be Heard
- Approval of minutes from the September 5, 2024 Meeting
- Working Group Presentations
 - a. Accomplishments and The Road Ahead
 - i. County Enterprise GIS (10 minutes)
 - ii. Department Presentations (5 minutes each)
- Open Discussion
- Upcoming Meetings
- Adjournment

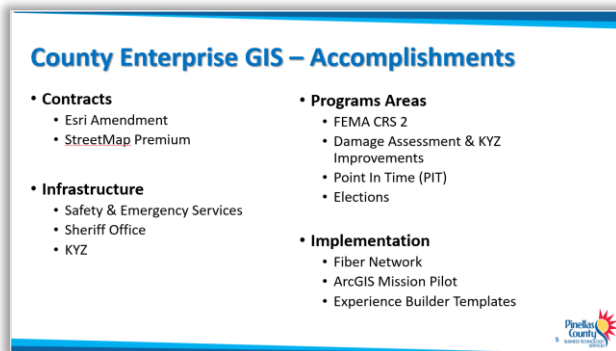
Pinellas County
FLORIDA



Esri Annual Planning Workshop

- Discuss GIS initiatives for 2025 and beyond
- Allows Esri to plan and coordinate resources
 - 200 Annual Credits for Professional Services / Training
 - Direct Fund Professional Services / Training

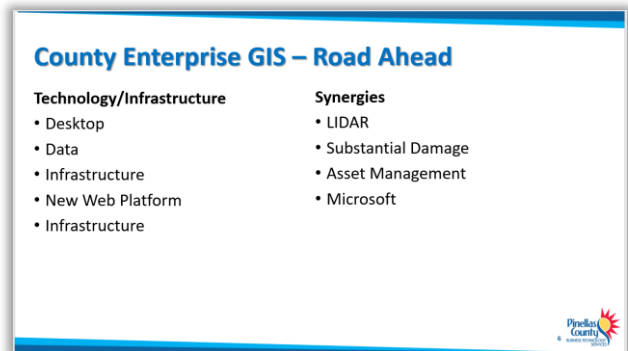
Pinellas County
FLORIDA



County Enterprise GIS – Accomplishments

- **Contracts**
 - Esri Amendment
 - StreetMap Premium
- **Infrastructure**
 - Safety & Emergency Services
 - Sheriff Office
 - KYZ
- **Programs Areas**
 - FEMA CRS 2
 - Damage Assessment & KYZ Improvements
 - Point In Time (PIT)
 - Elections
- **Implementation**
 - Fiber Network
 - ArcGIS Mission Pilot
 - Experience Builder Templates

Pinellas County
FLORIDA



County Enterprise GIS – Road Ahead

- **Technology/Infrastructure**
 - Desktop
 - Data
 - Infrastructure
 - New Web Platform
 - Infrastructure
- **Synergies**
 - LIDAR
 - Substantial Damage
 - Asset Management
 - Microsoft

Pinellas County
FLORIDA

County Enterprise GIS – Technology

Desktop

- ArcMap to ArcGIS Pro
- Service Oriented Architecture

Data

- Edit Workflows (Branch Versioning)
- pGIS SQL to ArcGIS Online
- Aerial Imagery Hosting
- Municipal Data Sharing

Infrastructure

- Enterprise Servers in Cloud
- Hosting City of Clearwater

New Web Platform

- 100+ of Web Applications
- Crime Viewer



County Enterprise GIS – Synergies

LIDAR

- Elevation
- Surface Return
- Contour Lines



Asset Management

- Cityworks Online
- Reporting
- Digital Asset Management Plans

Substantial Damage

- FEMA
- Building/Permitting
- Communication

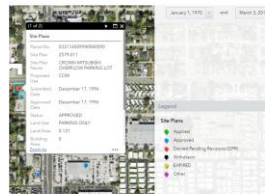
Microsoft

- PowerBI – Reporting
- Microsoft Office 365 – Excel, Powerpoint
- SharePoint – Document Attachments



Building and Development Review Services

"Combined" Flood Layer for Permitting



Permitting Dashboard/Map



Building and Development Review Services

Storm – Damage Assessment Mapping

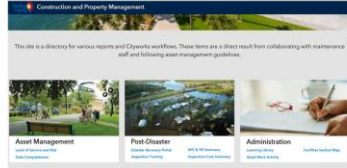


Storm – Substantial Damage Assessments



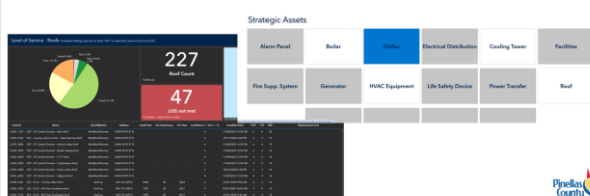
Construction and Property Management (DAS)

Reporting Center Experience Builder



Construction and Property Management (DAS)

- Upcoming: Completing Risk Models for all asset classes



Forward Pinellas

Where we have been (2024)

- Live Local Act Dashboard
- Generated a lot of attention on our website and local news

Where we are going (2025)

- ArcUrban is the future!
- Several new projects planned for Gateway, Tarpon Springs, Clearwater and Indian Rocks Beach
- Live Local Act Dashboard will likely shift to ArcUrban as well.



Housing and Community Development

Pinellas Historic Resource Project Partnered with University of Florida GeoPlan Center

Objectives

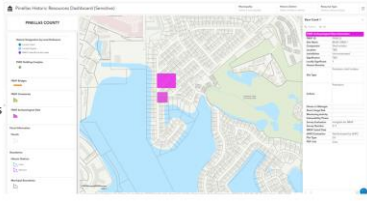
- Identify inventoried historic resources countywide and by jurisdiction.
- Identify nationally designated resources countywide and by jurisdiction
- Identify locally designated resources by jurisdiction
- Identify building and structures eligible for survey (50 years of age or older)
- Flood hazard data to identify at risk historic properties.



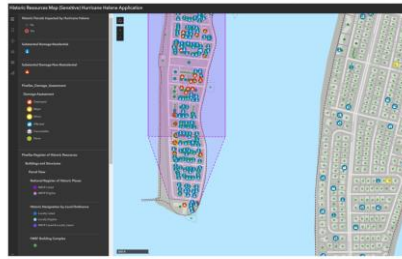
Housing and Community Development

Combining PAO data with site data to map

- Florida Master Site File ~13,000 Sites
 - Focus Areas (FMSF)
 - Buildings and structures - 97%
 - Bridges - 5%
 - Cemeteries - 5%
 - Archaeological Sites - 2%
- National Register of Historic Places 7,762 Sites
 - Focus Areas (National Register)
 - Buildings and Structures - 7,737
 - Archaeological Sites - 12 sites
 - Cemeteries - 2 sites
 - Historic Districts - 11 Districts
- Local Landmark and Districts
 - 1,809 Sites/Districts



Housing and Community Development



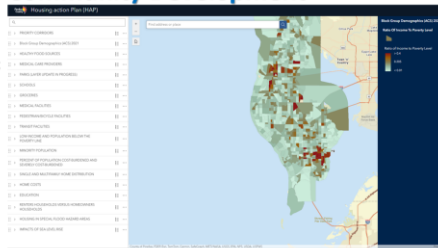
How this data assisted during Hurricane Helene and Hurricane Milton

Road ahead: combining SD data with Historic Sites for survey

Housing and Community Development

Pinellas Housing Action Plan (HAP) tool

- Identifies County's housing and community development
- Identifies suitable housing based on criteria
- 114 layers of enhanced data
- Goal is to make this publicly available after more friendly version developed.



Parks and Conservation Resources

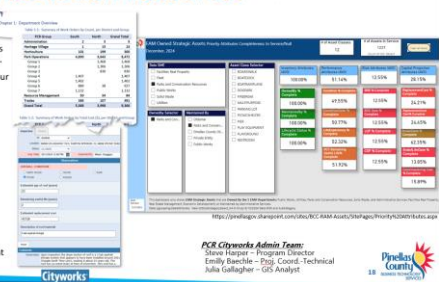
Slide 2 of 2

2024 Accomplishments

- Prepared quarterly summary reports of our Cityworks work orders (WOs).
- Improved "data completeness" on our strategic assets; special focus on Install Date (for age).
- Recorded 353 roof inspections.
- Reconfigured 239 Install WO's to include an asset onboarding questionnaire.

2025 Goals

- Continue to build out "data completeness" on our strategic assets.
- Begin asset management plans.
- Enhance our PCR Asset Management Sharepoint page.



PCR Cityworks Admin Team:
Shawn Harper - Program Director
Emily Baehre - Proj. Coord. Technical
Julia Gallagher - GIS Analyst

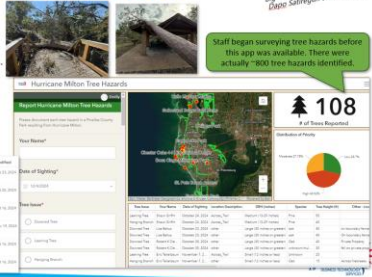
Parks and Conservation Resources

Slide 2 of 2

Featured Topic

Hurricane Milton caused extensive tree damages throughout all parks.

- Utilized Eri Survey123 app to catalog tree hazards.
- Used Prod Portal; all aspects of the app must be shared appropriately.
- To complete the survey, users must have a Portal account, a "Contributor" license, and an "Editor" role.
- Hidden fields can capture data beyond the survey questions.



Big thanks to eGIS for assistance
Dapo Satargien and Steve Clark

Property Appraiser's Office

- ArcMap to ArcGIS Pro Migration. Completion before April 2025.
- 3D View Analytics for Condominiums. View Analytics will provide additional "View" information to Condominium Appraisers.
- Upgrade All Spatial Databases to Latest Version of ESRI Software.
- Upgrade All ArcGIS Servers to Latest Version of ESRI Software.
- Upgrade www.pcpao.gov map components to latest version of ESRI software.
- Explore the creation of an advanced spatial analysis mapping tool for www.pcpao.gov

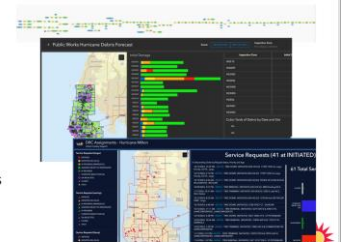
Public Works - Enterprise Asset Management Achievements

- Automated 6 new risk models (Traffic Signs, Water Navigation Signs, Sidewalks, Streets, Handrail, Guardrail)
 - Signs and Sidewalks use Python and Model Builder
 - Streets, Handrail and Guardrail use an attribute rule approach
- PowerBI "Data Completeness" Dashboard
 - >99% EAM Data Completeness score for PW-owned strategic assets
- PowerBI Asset and Service Profile
 - Daily automatic refresh that integrates with the county's public website to increase transparency
- Integration of Roadway Resurfacing Program fully into the GIS and Cityworks with new work order templates, mapbooks and dashboards



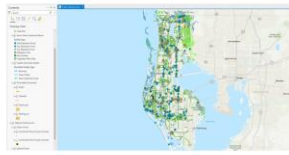
Public Works - Debris Management Innovations

- Coordinated with Emergency Management and our Debris Monitoring Contractor to develop a predictive model for debris demand
 - Uses damage assessments and lidar-based tree canopy to predict initial demand, and load ticket data to estimate remaining demand
 - Implemented with Model Builder, Python and ESRI Dashboards
- Worked with EGIS to provide debris contractors temporary AGOL access to facilitate work planning and tracking with Dashboards



Public Works - Green Infrastructure Mapping

- Working to help integrate the EAM and Sustainability/Resiliency programs by prototyping a consolidated layer definition to thematically extract and display all examples of 'green infrastructure' from existing datasets
- Looking to publish prototype in the near future, and invite other departments to expand the layer definitions to incorporate any 'green infrastructure' examples not currently included (e.g. green roofs, rain collection, etc.)



Safety and Emergency Services Enhancements

AED Solution moved to production and added to 911 maps.



Labeled unit types and changed colors based on zoom level for the call takers, dispatchers, and responders.



Safety and Emergency Services Gateway Expressway



- *Creation of roads, on-ramps, and mile markers for routing.
- *Core CAD coding and SMP custom road edits to route the units to the nearest on ramp related to the mile marker location.
- *Wall maps matched MDC and 911 dispatch maps.
- *Multiple site visits/tours to verify data.
- *Individual response/preplan created for each on-ramp.

Safety and Emergency Services

Quick Overview of the Three Storms we provided support for.

<https://arccg.is/1lx50i>

Additional Projects

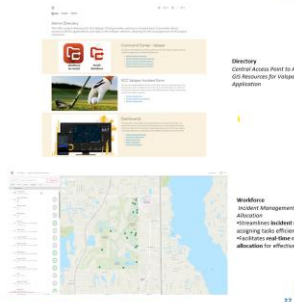
- Closest Unit/AVL Dispatch.**
 - *Switched AVL from closest unit by distance to closest by time.
 - *Added the ability to route to landmarks.
 - *Updated, tested, and published multiple versions of ESRI Street Map Premium.
- Addressing**
 - *Data Validation for NENA NG911 98% match
 - *New Group Layers (Reference Data)
 - *HOA Associations
 - *911 Wireless Cell Sites
 - *Geopolitical
- Vendor Applications/Projects**
 - *Intrado NG911 Core Services
 - *Datamark
 - *FlonXSP
 - *Marvis

Sheriff's Office

Valspar Application
ILP Solution for Incident Reporting During the Annual Golf Tournament
•Utilizes various GIS tools for efficient incident management.
•Streamlines reporting and tracking of incidents throughout the event.



Dashboard
Real Time Incident Visualization
•Provides live updates on incidents as they unfold.
•Offers clear, interactive visualizations for further decision-making.

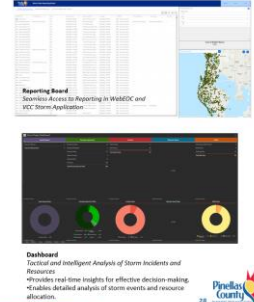


Sheriff's Office

VCC Storm Solution
Application for Storm Event Management and Request Handling

Purpose:
Manages storm events and related requests through an integrated system.

- Key Features:**
 - GIS Tools for efficient reporting of storm incidents in the field.
 - Collaboration with PCAD Analysts (ILP) using multiple tools.
 - Workforce Management, Survey Forms, and Dashboards for streamlined data collection and analysis.
 - Experience Builder for intuitive interface and user interaction.
 - Quick Capture reintroduced for a more user-friendly experience.



Sheriff's Office

ArcGIS Mission

- Used for the Shallow Water Exercise
- ArcGIS Mission is a comprehensive command and control system for tactical operations.
- Partnership with ESRI to test capabilities and explore opportunities for further enhancements.
- Provides valuable feedback that supported the enhancement of the newly released ArcGIS Mission version.



ArcGIS Mission Manager



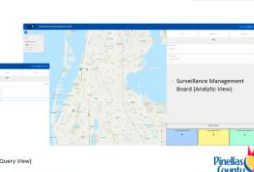
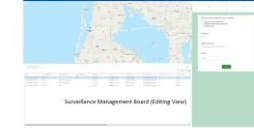
ArcGIS Mission Dashboard

Sheriff's Office

Surveillance Camera Registration for Pinellas County (2025)

Public Surveillance Camera Registration
Registration through the Public Surveillance Camera Registration Form (Survey 123)

Management of Surveillance Camera Data
Utilizing Experience Builder for data management and access



Solid Waste



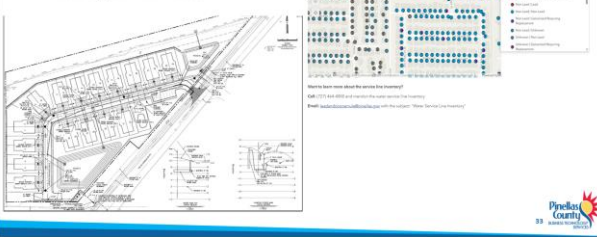
Solid Waste

Utilizing the Internal Storm Viewer to evaluated temporary debris piles on site



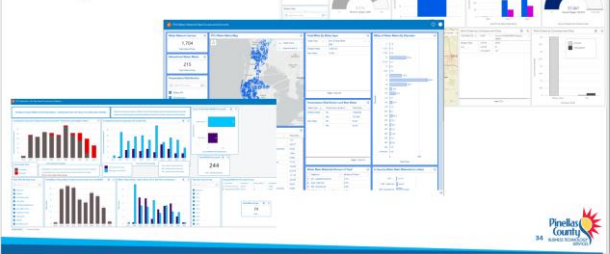
Utilities

CDMSmith As-Built Project and Lead and Copper Rule Revision



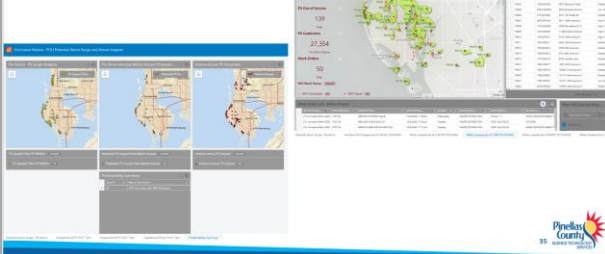
Utilities

Insights Dashboards



Utilities

Hurricane Sustains and Improves



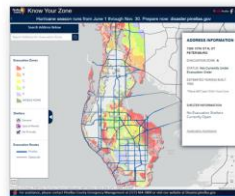
Utilities

Asset Management Plans and Data Analysis

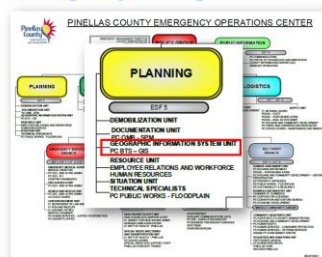


Emergency Management

- 2024 "Blue Sky"
- KYZ 2.0
- Population Analysis & Shelter Needs Assessment (annual)
- Critical Facility Risk Assessment and Dashboard
- Preliminary Damage Assessment support and training
- 40,000 Users in 2 Minutes!



Emergency Management



GIS Unit



Emergency Management

Where should we send Outreach field teams?
Where are the people that speak Vietnamese?
Where are the intersection managers?
Can we get access to SAR/COP data?
What is the # of buildings pre-FIRM affected by surge?
Where did it flood?
How many residents lost their home?
How many homes could be substantially damaged?
Can I get a poster printed of the gals? POCs?
Can we have a dashboard for saving 911 calls?
How many people are registered in the shelters?
What drone videos are available from social media?
What damages are being reported on social media?
Can I have access to that map? Data? Dashboards?
Can I have a damage report for my jurisdiction?
Can we open/close shelters on KYZ and EM website?
How many IA claims have been filed?
Which homes have NHP insurance?
Where can I get gas?
What data are being collected by the PCSO?
Where are the road closures?
Where can we put Star Links?
Can we make data available to...?

Where can we put temporary travel trailers?
Give me a list of all employees in A, B, C.
Where should we put POCs, DMMs, recovery sites?
Are polling locations damaged?
What buildings have livable space on the 1st floor?
Drone! Where do we send them?
Are there damages to our 911 towers?
Are there damages to our creeks, waterways?
Where are the hardest hit communities?
How many people accessed KYZ? When did we go viral?
How accurate is Duke's of 4 customers affected?
How many hotels are in each evacuation zone?
How many businesses are damaged?
Can we get ArcGIS accounts for a billion people?
Which county buildings can be used by employees?
Where are all the vacant parcels between 5 and 10 acres?
How many homes were damaged? How many flooded?
Where is Search and Rescue being conducted, where are the rescues, hazards, damages?
Can we have an app for residents to find hotels in non evacuation areas?
What is the population in each evacuation zone? Is unincorporated?
How many commercial businesses were damaged in unincorporated to communicate need for FEMA debris waiver?

How many hospitals do we need to evacuate because they are going to lose water due to the St. Pete shutdown?
Where are there downed power lines across roads that could keep us from reopening the county?
When is surge rising, peaking, and receding so we can know when to set PCSO shifts?
Where is the power out? What is affected? Healthcare facilities? County buildings? Traffic signals?
A nursing home lost their transportation and shelter facility can they stay based on surge predictions?
Where are all the condition 5 911 calls and where are the hot spots to direct response?
How many residents and homes were triple or double impacted by Debby/Helene/Milton?
Map the HOAs and identify which HOAs, communities have private gates for the debris haulers.
Where is marine debris? Derelict vessels? Where should we send out haulers?
Give me a list of addresses in unincorporated, Stink, that had substantial damage inspections.
Do we want side scan mapping to identify submerged obstructions, lost vessels, etc? Where?
Can we activate/deactivate our storm apps, e.g. Storm Surge Risk Viewer, Shelter Registration, 911-Storm Impacts geo-events server, etc.
Can we have an app for viewing all imagery, drone videos, DA data, photos collected by SERT, Outreach, etc.
Can we get a mobile survey for tracking PCSO outreach check ins with businesses?
Can you GAO? DA data, fix duplicates, more points to a parcel, screen-citizen data, flag major complaints.
How many healthcare facilities are impacted by the St. Pete sewer shutdown? How many special needs residents?
What is the average year built, % IM individuals, income, average rent in unincorporated?
How many commercial businesses were damaged in unincorporated to communicate need for FEMA debris waiver?

2024 EM-GIS Wins

- Drones!
 - ~1 TB of drone video
 - 1" aerials for the ENTIRE county
- Search & Rescue (USAR-SARCOP)
- KYZ stability
 - 40,000 Users in 2 Minutes!
- Helene + Milton = Over 3,000 hours and counting!
- Dozens of online maps, dashboards, surveys, datasets
 - Only a handful of printed posters

Looking Ahead...

- Recovery support > Data Working Group
- Substantial Damage improvements
- Improved data sharing and workflows between county and cities
- Continued integration & accessibility of GIS/Data products across Depts



GIS Conferences - Upcoming

- Esri Developer & Technology Summit
 - March 11 – 14, 2025, Palm Springs, CA
- Esri Southeast User Conference
 - April 8 – 9, 2025, Atlanta, GA
 - 5 of 10 Complimentary Passes requested so far
- Esri 2025 User Conference
 - July 14 – 18, 2025, San Diego, CA
 - 13 of 25 Complimentary Passes requested so far
- Esri Infrastructure Management & GIS Conference
 - October 28 – 30, 2025



Open Discussion



Next Meeting/Adjournment



Working Group Meetings:

- January 30, 2025
- February 27, 2025
- March 27, 2025
- April 24, 2025
- May 29, 2025
- June 26, 2025

Steering Committee Meetings:

- March 6, 2025
- June 5, 2025
- September 4, 2025
- December 4, 2025

